

SmoothCool



The SmoothCool System was developed to decrease treatment time by using High Peak Energy up to 65J/cm² over an increased spot size of 5cm². Provides Fast, Effective hair removal that is safe and comfortable.

The Intelligent Contact Cooling System minimizes pain and discomfort. This increases the safety of treatment by only emitting a pulse when the specified skin temperature is sensed through the handpiece sapphire filter.

Advantages of SmoothCool

- High – Peak Power
- The most advanced Cooling Technology
- Faster treatment
- The deepest penetration of light energy

Treats a Wide Range Skin Conditions such as:

Photo Facial, Acne, Vascular Lesions, Pigmented Lesions, Sun Damaged Skin, Large Pores, Rosacea Telangiectasia, Slight Wrinkles, Brown Spots and Freckles

System Features

High-Peak Power

Only 1 shot is enough to destroy the hair in the Anagen stage of the hair growth cycle. This is possible by using Sub-Zero Cooling and High-peak energy irradiation that reduces the loss of energy through the skin.

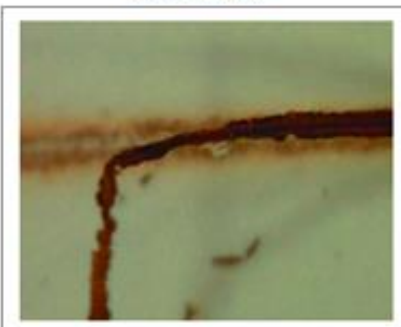
Competitor

300W Low-Peak Power
100ms, 50J/cm²



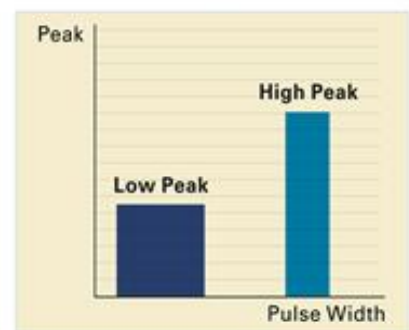
SmoothCool

3,000W High-Peak Power
10ms, 50J/cm²



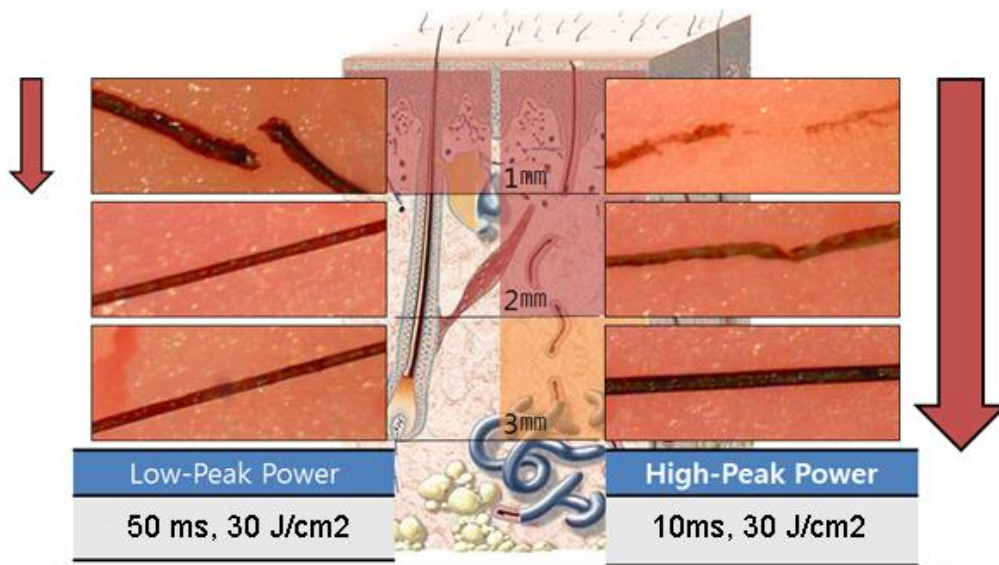
The difference of Peak = 10 times

◀ Microscopic analysis
▼ Correlation of Pulse Width and Peak
in the same energy



Penetration test by different Peak power

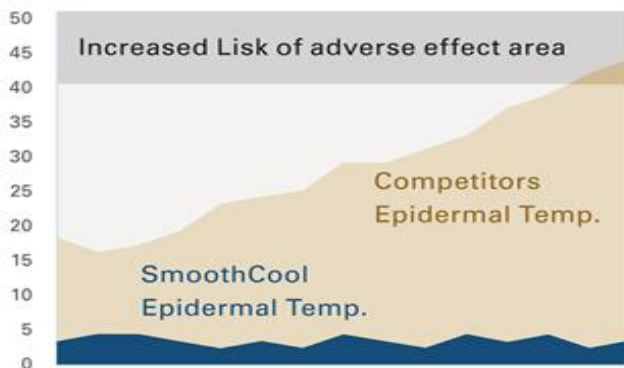
[Test method] Insert the hair between layers of ham 1 mm thick and emit one pulse at the same Energy level. [Left side] shows less protein denaturation. [Right side] Smooth Cool with a much higher peak at the same power shows much deeper penetration and more damage to hair.



ATC™ Technology

ATC Technology? : Automatic Temperature Controller

The temperature monitor of the hand-piece reads the skin surface temperature automatically and maintains it under 4°C during emission. This unique safety mechanism prevents unwanted side effects.



- ◀ Surface temperature change over duration of 30 pulses.
- ▼ Example of a skin burn after hair removal treatment by a system without ATC.



Depth of penetration

